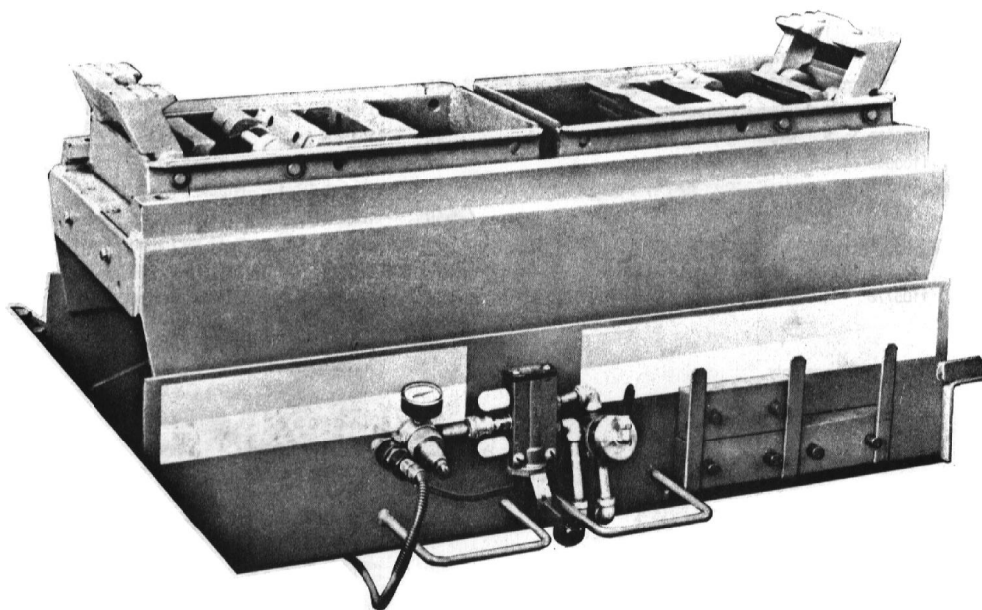




Model 68 Dual Roller Jack Parts Reference

Form 77-4365-2

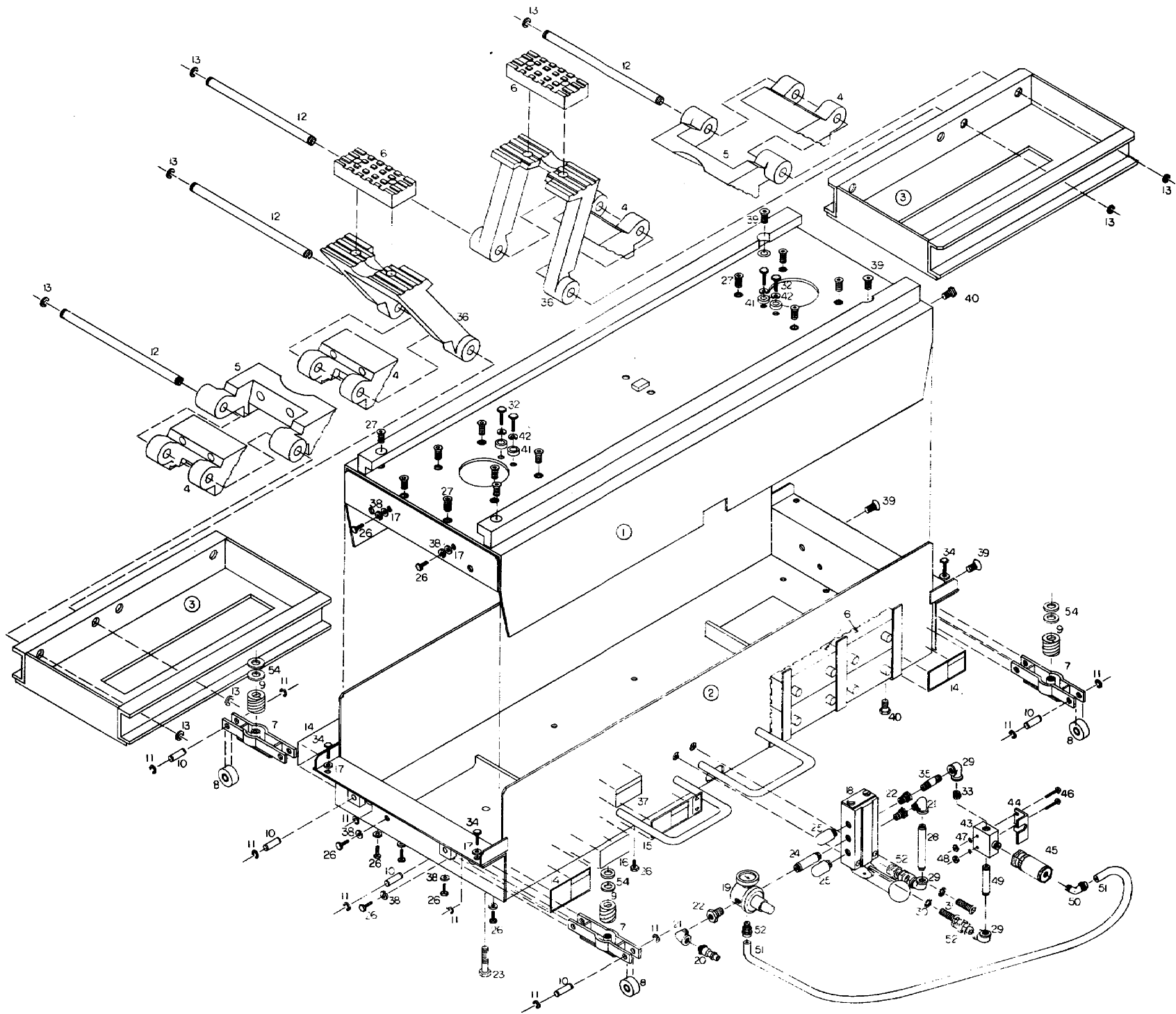


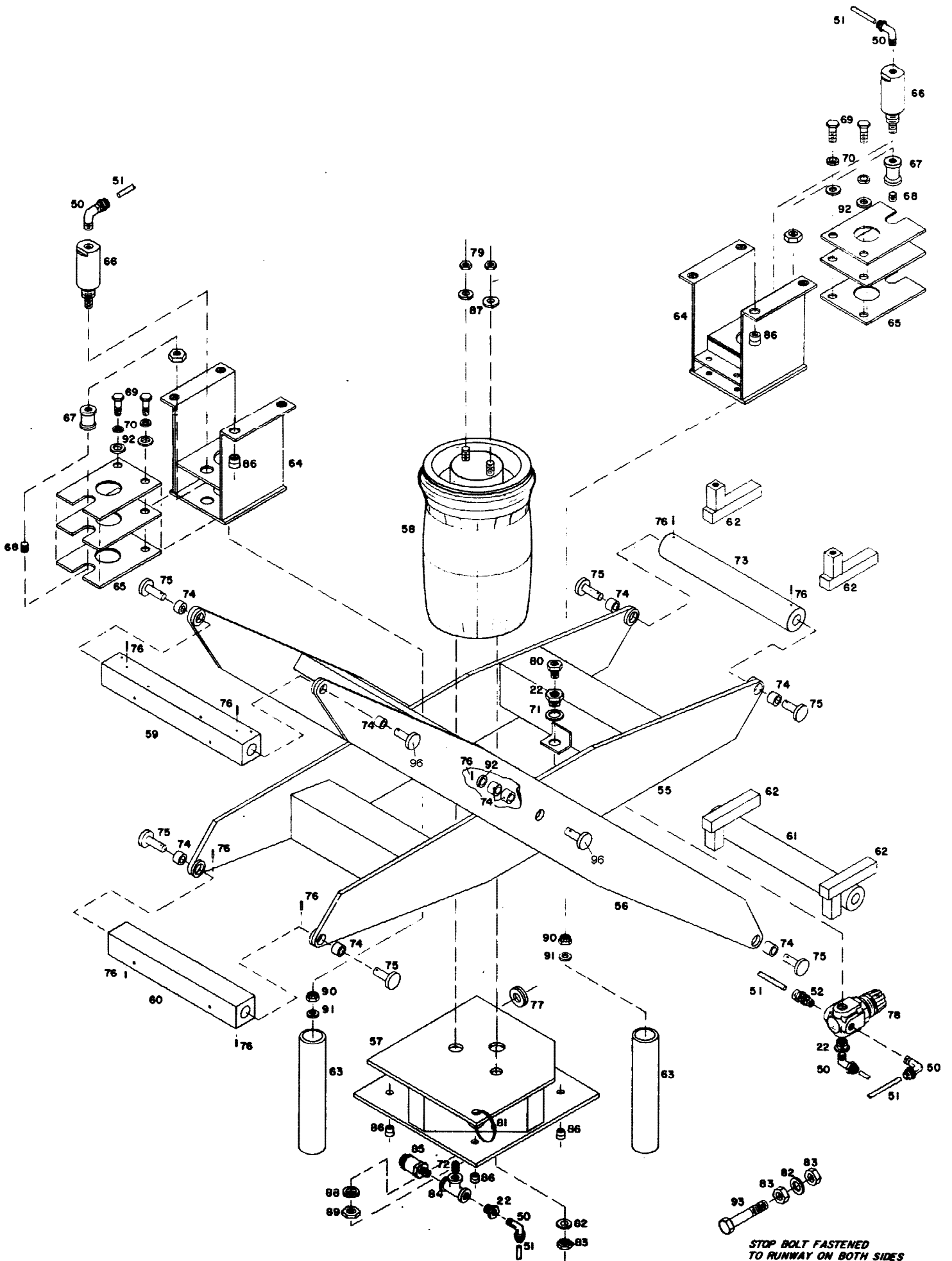
<u>ITEM #</u>	<u>PART #</u>	<u>QTY.</u>	<u>DESCRIPTION</u>
1	59964	1	Cover Weldment - Top
2	59956	1	Base Weldment
3	59961	2	Extender Weldment
4	59972	2	Shoe - Short
5	59973'	2	Shoe - Medium
6	59970	6	Block Assembly - Lifter Pad
7	59936	4	Roller Mtg. Bracket Assembly
8	59935	4	Roller Assembly
9	59939	4	Die Spring
10	68558	8	Shaft - Roller
11	1100346	16	Cotter pin
*	68559	1	Roller Shaft Kit
12	59975	4	Shaft
13	1185427	8	Ring - Retaining
14	59840	1	Label - Warning, Roller
15	59841	1	Label - Warning, Lever
16	68454	1	Label - "68"
*	83203	1	Label - "FMC"
17	1107381	10	Washer Flat 1/4
18	59790	1	Value - 4 - Way Assembly
*	98132	1	Value - 4 - Way
*	98133	1	Knob, Value Lever
19	68249	1	Regulator - Air
*	68248	1	Gage
21	1105157	1	Elbow fitting - 90
22	1102072	6	Bushing - Reducer 1/4" - 1/8"
23	1100048	2	Screw -3/8-16X2
24	1105759	1	Nipple - 1/4" NPT
25	59659	2	Muffler - Air
26	1100805	12	Screw -1/4-20 X 3/4 H.H.C.
27	1177765	12	Screw -1/4-20 X 3/4 F.H.C.
28	1105778	1	Nipple -1/8 X 3
29	1105150	3	Elbow -1/8
30	1185180	2	L-Washer -1/4 Ext.
31	1100123	2	Screw -1/4- 20 X 1 1/4
32	1100045	4	Screw -5/16-18 X 1
33	1105423	1	Nipple -Close 1/2
34	1100806	4	Screw -1/4-20X11/4 H.H.C.
35	1105731	1	Nipple -1/8 X 1 1/2
36	68732	2	Shoe-Long
37	68002	1	Warning Label - Capacity
38	1100241	12	L-Washer - 1/4
39	1101698	4	Screw -3/8-16 X 3/4 F.H.C.
40	1187799	4	Screw -3/8-16 X 3/4 H.H.C.
41	59778	4	Spacer - Retainer
42	1100242	4	L-Washer - 5/16
*	83203	1	Label - FMC Trademark
*	985255		Color tape band, by the foot
43	68505	1	Value - Pneumatic
44	68022	1	Bracket - Value Mtg.
45	68030	1	Actuator - Pneumatic Value
46	1110673	2	Screw -#8-32 X 1 RD. Hd.
47	1101583	2	Washer - Lock #8
48	1109765	2	Nut -#8-32

* NOT SHOWN; for reference only

<u>ITEM #</u>	<u>PART #</u>	<u>QTY.</u>	<u>DESCRIPTION</u>
49	1100890	1	Nipple -1/8 X 2
50	1101952	6	Elbow - Male 1/8 X 5/16
51	996074	6.1 ft.	Tube 5/16 Plastic
52	1101953	4	Union 1/8 X 5/16 Tube
54	1100255	24	Washer Flat 5/16
55	59776	1	Scissor Weldment - Inside
56	59777	1	Scissor Weldment - Outside
57	68375	1	Support Weldment - Air Bag
58	59987	1	Air Bag
59	59991	1	Trunnion - top
60	59992	1	Trunnion - Bottom
61	59994	1	Roller - Bottom
62	59995	4	Guide Weldment - Roller
63	59908	2	Post Weldment - Safety Latch
64	68016	2	Frame Weldment - Safety Latch
65	59906	6	Plate - Safety Latch
66	59815	2	Cylinder - Air
67	59783	2	Spool - Safety Latch
68	1113035	2	Screw -7/16-20 X 7/16 Set
69	1106927	4	Screw 3/8-16 X 11/2
70	1100243	4	L-Washer - 3/8
71	1100257	1	Washer - Flat 1/2
72	1105715	1	Nipple Close
73	59993	1	Roller - Top
74	63554	12	Bearing - Sleeve
75	98087	8	Pin - Scissor
76	1177718	10	Roll Pin - 5/32 Dia. X 1 1/4
77	68017	1	Grommet
78	68094	1	Regulator - Air
79	1121509	2	Nut 3/8 - 16
80	59888	1	Orifice
81	1101610	1	Tie Wrap
82	1100245	5	L'Washer - 1/2
83	1109531	1	Nut - 1/2 - 20
84	1101628	1	Tee - 1/4
85	1262153	1	Valve - Pressure Relief
86	58139	12	Nutsert - 1/4 - 20
87	1100243	2	L'Washer - 3/8
88	1101627	1	L'Washer - 3/4
89	1109592	1	Nut - 3/4 - 16
90	1120240	2	Nut - 3/8 - 16 E.S.N.A.
91	1107383	6	Washer - 3/8 Flat
92	1100266	4	Washer - 5/8 Flat
93	68732	2	Longshoe extension
94	68454	1	68 decal
95	83203	1	FMC decal
96	98021	2	Center Sissor Pin
*	98072	1	Warning Label
*	110131	8	Washer
*	1100064	4	Screw (in bag)
*	1121511	4	Nut (in bag)
*	1100068	8	Screw 3/8 - 16 x 3/4
*	1100806	4	Screw 1/4 - 20 x 1/4
*	59953	2	Post Plate

* NOT SHOWN; for reference only





**STOP BOLT FASTENED
TO RUNWAY ON BOTH SIDES
FRONT & REAR**